

Winding Type Chip Inductor

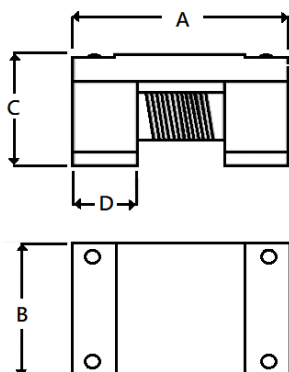
APO322523TV-SERIES

1. Features

1. Ferrite core wire wound construction.
2. High Reliability due to wire wound type construction.
3. Small footprint as well as low profile.
4. 100% Lead(Pb) & Halogen-Free and RoHS compliant.
5. High reliability -Reliability tests comply with AEC-Q200
6. Operating temperature-55~+150°C(Including self - temperature rise)
7. Inductor for use in-vehicle PoC (Power Over Coax)



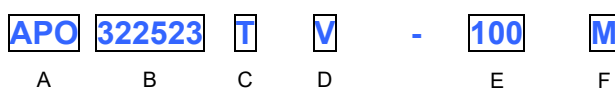
2. Dimension



Size	A	B	C	D
APO3225	3.20±0.20	2.50±0.20	2.30±0.20	0.58±0.10

Unit:mm

3. Part Numbering



A: Series
 B: Dimension L x W x H
 C: Application
 D: Category Code V=Vehicle
 E: Inductance 100=10.0uH
 F: Inductance Tolerance M=±20%

4. Specification

TAI-TECH Part Number	Ls(μH) (@100KHz)	DCR (Ω) Max.	Rated current(mA)	
			Isat (mA)typ.	Irms (mA)typ.
APO322523TV-4R7M	4.7±20%	0.10	720	1500
APO322523TV-100M	10.0±20%	0.15	450	1300

Note:

Isat : when based on the inductance change rate (30% below the initial L value)

Irms : When based on the temperature increase (temperature increase of 40°C by self-heating)