

Ferrite Bead

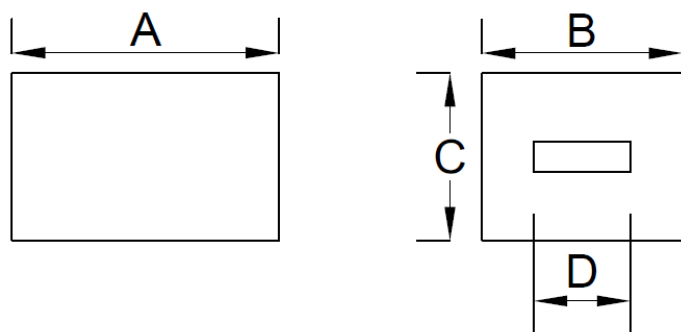
BPH853025R5V-101T

1. Features

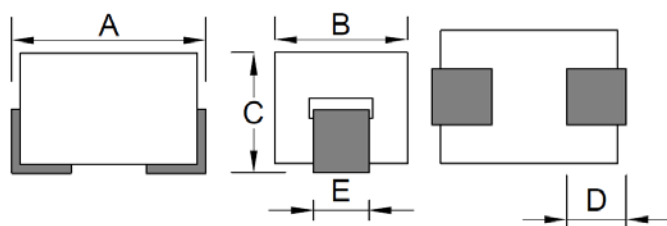
- 100% Lead(Pb) & Halogen-Free and RoHS compliant.
- High reliability -Reliability tests comply with AEC-Q200
- Operating temperature -40~+125°C (Including self - temperature rise)



2. Dimension



CORE SIZE			
A(mm)	B(mm)	C(mm)	D(mm)
8.5 ±0.25	3.0 ±0.15	2.5 ±0.15	1.5 ±0.15



PRODUCT SIZE				
A(mm)	B(mm)	C(mm)	D(mm)	E(mm)
9.0 ±0.40	3.0 ±0.15	2.8 ±0.25	1.50±0.50	1.25±0.20

3. Part Numbering

BPH **853025** **R5** **V** - **101** **T**

A: Series
 B: Dimension
 C: Material Ferrite Core
 D: Category Code V=Vehicle
 E: Impedance 101=100Ω
 F: Packaging T=Taping and Reel

4. Specification

TAI-TECH Part Number	ELECTRICAL REQUIREMENTS 1			ELECTRICAL REQUIREMENTS 2			DCR (mΩ) Max.	Rated Current(A)	
	Impedance (Ω)	Tolerance (%)	Test Frequency (MHz)	Impedance (Ω)	Tolerance (%)	Test Frequency (MHz)		ΔT=40°C TYP.	ΔT=60°C TYP.
BPH853025R5V-101T	65	±25	25	100	±25	100	1.00	30(1) 13(2)	40(1) 18(2)

Note:

Rated Current :

(1) : Chroma high current test fixture.

(2) :PCB test fixture (30x45mm copper pattern , 50um copper thickness).

Typical Impedance v.s. Frequency Curve

