

## SMD LAN Inductor for Capacitive Type LAN Module

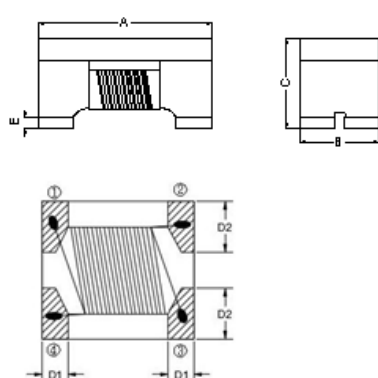
DCM3532F2SV-750T03

### 1. Features

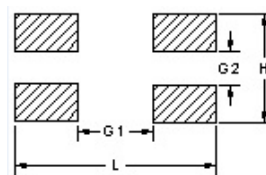
1. High common mode impedance at high frequency effects excellent noise suppression performance.
2. DCM3532F2SV series realizes small size and low profile. 3.5x3.2x2.3mm
3. 100% Lead(Pb) & Halogen-Free and RoHS compliant.
4. Operating temperature-40~+85℃ (Including self - temperature rise)
5. High reliability -Reliability tests comply with AEC-Q200



### 2. Dimension



#### Recommended PC Board Pattern



Series	A(mm)	B(mm)	C(mm)	D1(mm)	D2(mm)	L(mm)	H(mm)	G1(mm)	G2(mm)
3532F2SV	3.5±0.2	3.2±0.2	2.3±0.2	0.63±0.1	1.18±0.1	4.40	3.80	2.45	0.90

Units: mm

### 3. Part Numbering

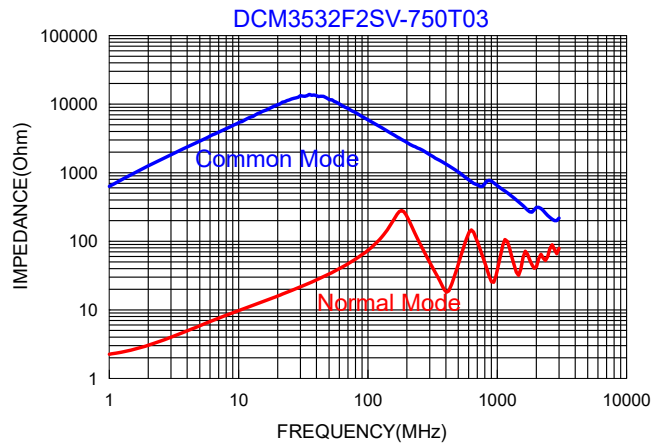
DCM 3532 F 2 S V - 750 - T03

A B C D E F G H

A: Series  
 B: Dimension  
 C: Material Ferrite Core  
 D: Number of Lines 2=2 lines  
 E: Type S=Shielded  
 F: Category Code V=Vehicle  
 G: Inductance 750=75 μH  
 H: Rated Current 03=300mA

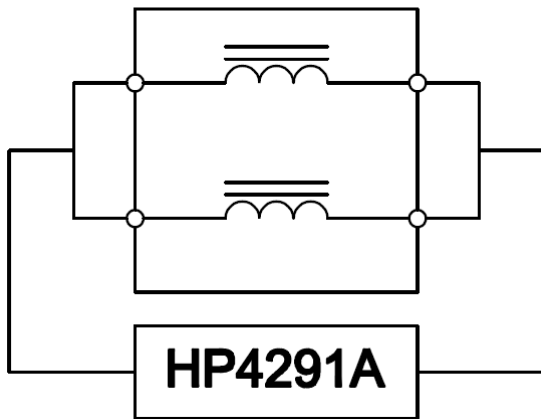
### 4. Specification

TAI-TECH Part Number	Inductance(μH) [100kHz/0.1V] Min.	DC Resistance (Ω)Max.	Rated Current (mA)	Rated Volt. (Vdc)	Withstand Volt. (Vdc) max.	IR(Ω) min.
DCM3532F2SV-750T03	75	0.8	300	50	125	10M



5. MEASURING CIRCUITS 2LINE

Common mode



Differential mode

