

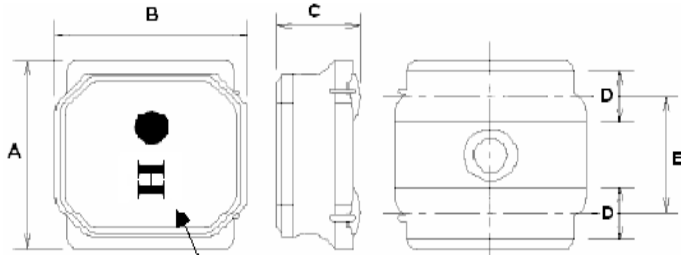
SMD Power Inductor YHC48B-Series

1. Features

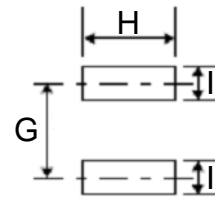
1. This specification applies Low Profile Power Inductors.
2. 100% Lead(Pb) & Halogen-Free and RoHS compliant.
3. Operating temperature :-40~+125°C (Including self-temperature rise)



2. Dimensions



Recommended Land pattern

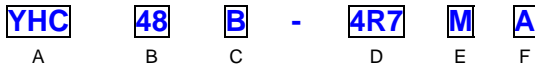


Inductance Symbol

Series	A	B	C	D	E	G	H	I
YHC48B	4.0±0.2	4.0±0.2	1.8 max.	1.1±0.2	2.5±0.2	2.8 ref.	3.7 ref.	1.2 ref.

Unit: mm

3. Part Numbering



- A: Series
- B: Dimension
- C: Type
- D: Inductance 4R7=4.70uH
- E: Inductance Tolerance M=±20%
- F: Code

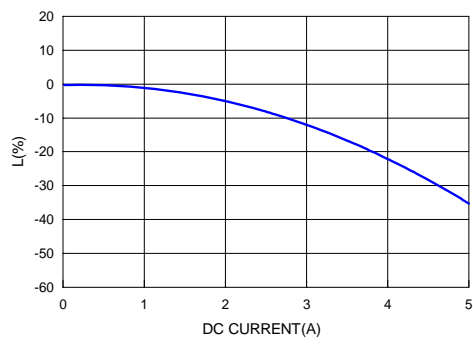
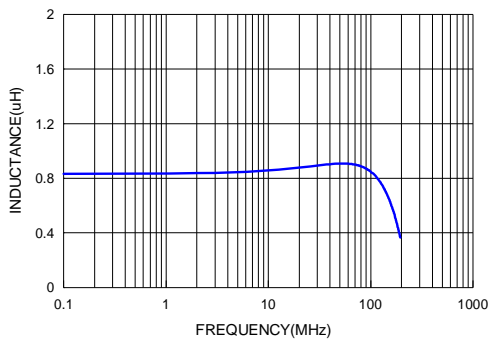
4. Specification

TAI-TECH Part Number	Inductance Symbol	Inductance (uH)	Tolerance (%)	Test Frequency (Hz)	SRF (MHz) min.	DCR (Ω) ±20%	I sat (A) max.	I rms (A) max.
YHC48B-1R0YA	A	1.0	±30%	1V/100K	90	0.027	4.00	3.20
YHC48B-2R2MA	C	2.2	±20%	1V/100K	60	0.042	3.00	2.20
YHC48B-4R7MA	H	4.7	±20%	1V/100K	35	0.070	2.00	1.70
YHC48B-100MA	K	10.0	±20%	1V/100K	25	0.150	1.30	1.20

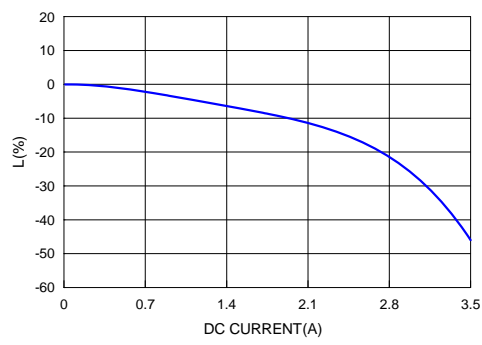
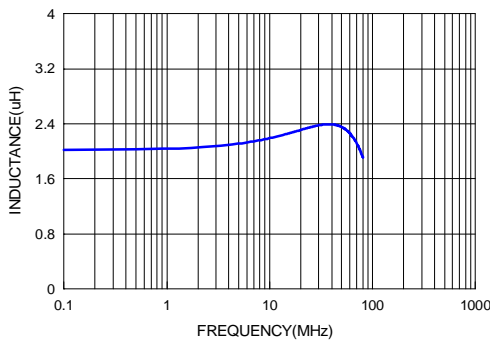
Note:
 Isat : Based on inductance change (ΔL/L0 : ≤-30%) @ ambient temp. 25°C
 Irms : Based on temperature rise (ΔT : 40°C typ.)

5. Typical Performance Curves

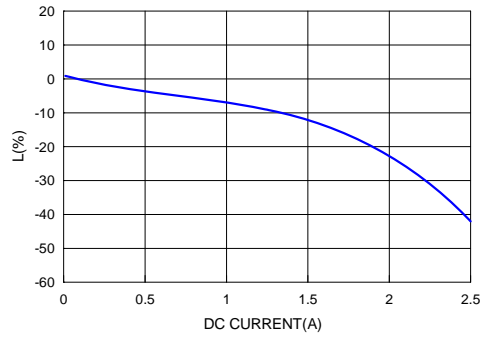
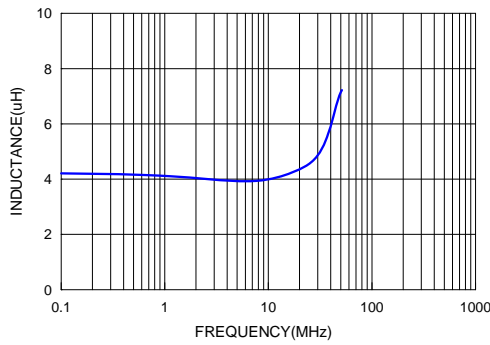
YHC48B-1R0YA



YHC48B-2R2M



YHC48B-4R7MA



YHC48B-100MA

